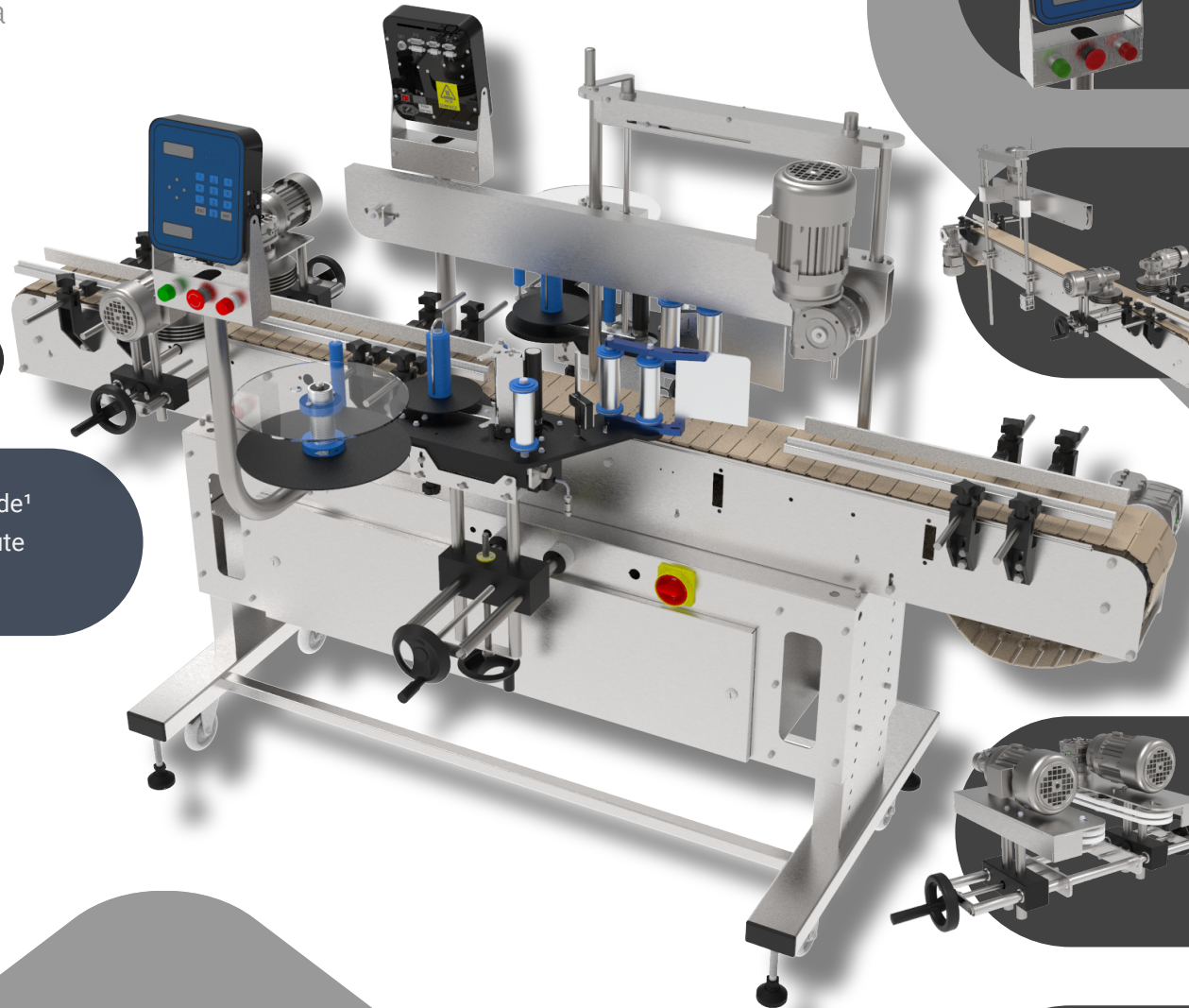


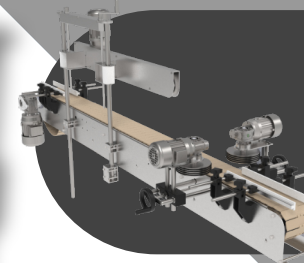
LS-80

FRONT AND BACK
LABELING SYSTEM

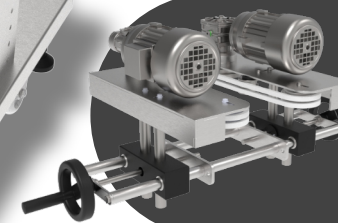
Produces from 15mm to 150mm wide¹
Speed up to 120 products per minute
Built in stainless steel



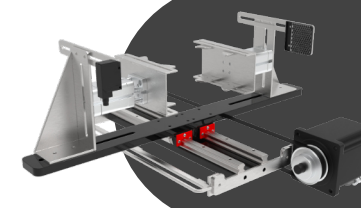
32 product memories
Numeric keypad with LCD display



Variable speed with automatic
synchronization
Adjustable side guides



The chain aligner system guides the
product, ensuring the correct position of
the containers before applying the label



The servo pneumatic aligner system
allows to orientate packages with
complex shapes



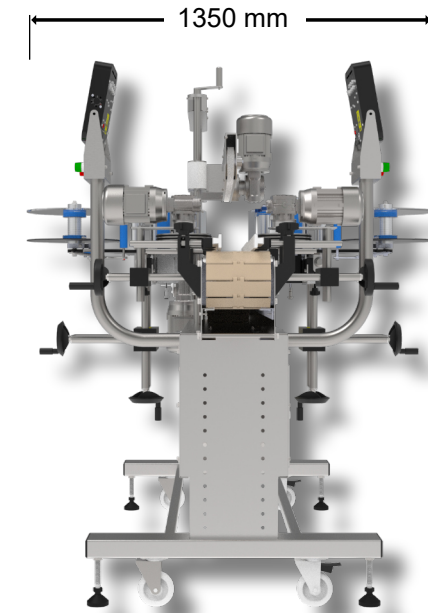
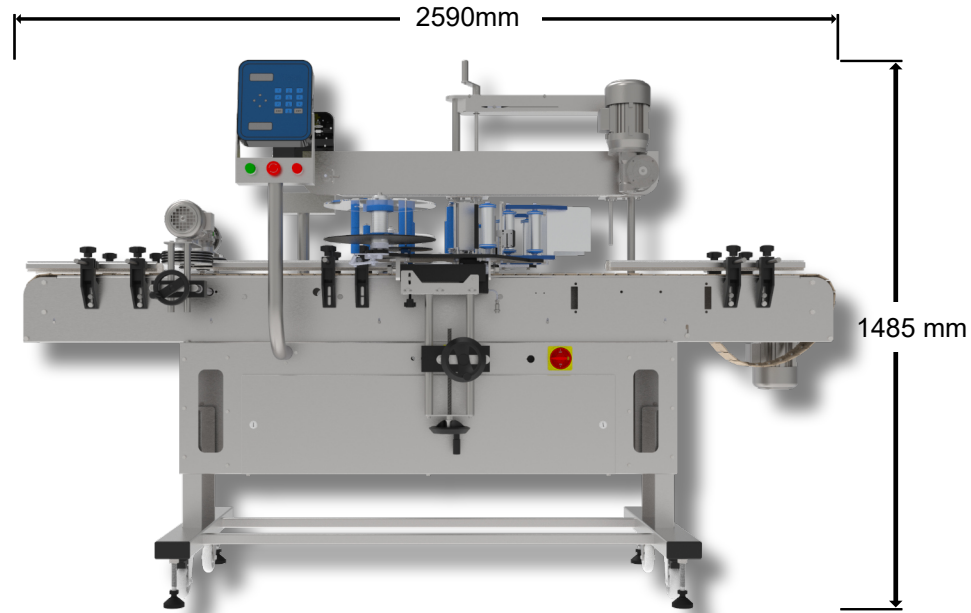
KETAN ARGENTINA S.A.
Av. Eva Perón 3491, San Martín (1650)
Buenos Aires - Argentina
Tel/Fax: (54 11) 5197-8587
E-mail: info@ketan.com.ar

¹The product must be able to keep itself stable. For unstable products consult our other machines

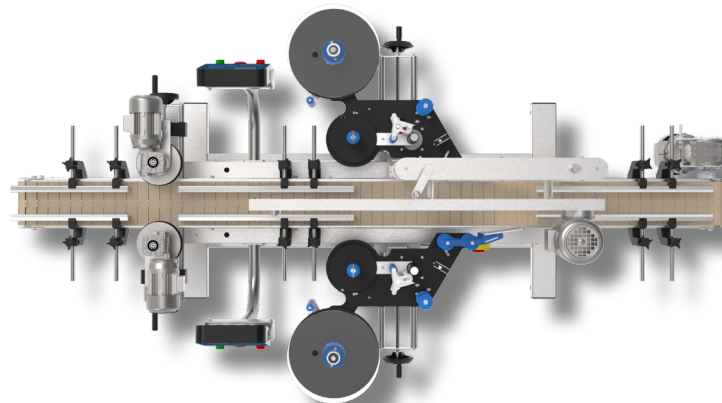
LS-80

FRONT AND BACK
LABELING SYSTEM

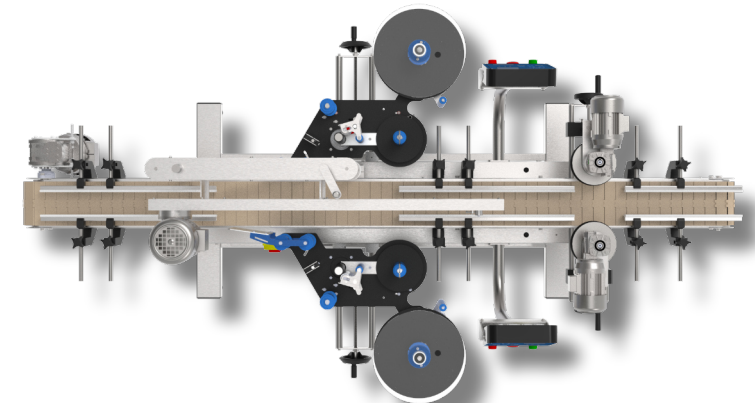
DIMENSIONS



Left Version



Right Version



KETAN ARGENTINA S.A.
Av. Eva Perón 3491, San Martín (1650)
Buenos Aires - Argentina
Tel/Fax: (54 11) 5197-8587
E-mail: info@ketan.com.ar

LS-80

FRONT AND BACK
LABELING SYSTEM

SPECS



KETAN ARGENTINA S.A.

Av. Eva Perón 3491, San Martín (1650)

Buenos Aires - Argentina

Tel/Fax: (54 11) 5197-8587

E-mail: info@ketan.com.ar

Compatible heads	K50, K200, KFLEX
Compatible aligners	Handrail (without alignment) Chain aligner Servo pneumatic aligner
Labeling speed	Up to 120 labels/min
Label width	Up to 115 or 170 mm depending on the labeling head
Paper roll inner diameter	76 mm
Paper roll outer diameter	Up to 300 mm
Product width	15-150 mm standard. Possibility of larger width on request
Power supply	2 kVA 220V-240V, 50Hz* 110V-120V, 60Hz*
Weight (kg)	300
Dimensions (mm)	2590 x 1350 x 1485

* The equipment is only compatible with one type of electrical supply. You must select the appropriate power supply when placing your order.